



Occidental Chemical Corporation

Chris Rodriguez
 Manager – Transportation Compliance
 Occidental Chemical Corp.
 Dallas, TX 75254-4300
 Phone: (972) 404-3503
 Cell: (361) 446-1176
 Fax: (972) 404-3231

ABOUT OCCIDENTAL CHEMICAL CORP.

Occidental Chemical Corporation manages a 43 mile pipeline spanning from Victoria to Refugio.

Occidental Chemical Corp. offices and Occidental Chemical Corporation headquarters are located in the FOURTEEN5 Office Park 14555 Dallas Parkway Suite 400 Dallas TX 75254-4300 1-800-752-5151.

WHAT DOES OCCIDENTAL CHEMICAL CORP. DO IF A LEAK OCCURS?

To prepare for the event of a leak, pipeline companies regularly communicate, plan and train with local emergency responders. Upon the notification of an incident or leak the pipeline company will immediately dispatch trained personnel to assist emergency responders.

Pipeline operators and emergency responders are trained to protect life, property and facilities in the case of an

emergency. Pipeline operators will also take steps to minimize the amount of product that leaks out and to isolate the pipeline emergency.

MAINTAINING SAFETY AND INTEGRITY OF PIPELINES

Occidental Chemical Corp. invests significant time and capital maintaining the quality and integrity of their pipeline systems and utilizes aerial surveillance and/or on-ground observers to identify potential dangers. Most active pipelines are monitored 24 hours a day via manned control centers where personnel continually monitor the pipeline system and assess changes in pressure and flow and notify field personnel if there is a possibility of a leak. Automatic shut-off valves are sometimes utilized to isolate a leak. Hazardous liquid pipeline operators have developed supplemental hazard and assessment programs known as Integrity Management Programs (IMPs). How to get additional information.

For an overview of our IMP, contact us at 713-655-7689.

EMERGENCY CONTACT:

1-877-300-5604

PRODUCTS/ DOT GUIDEBOOK ID#/ GUIDE#:
 Ethylene 1962 116P

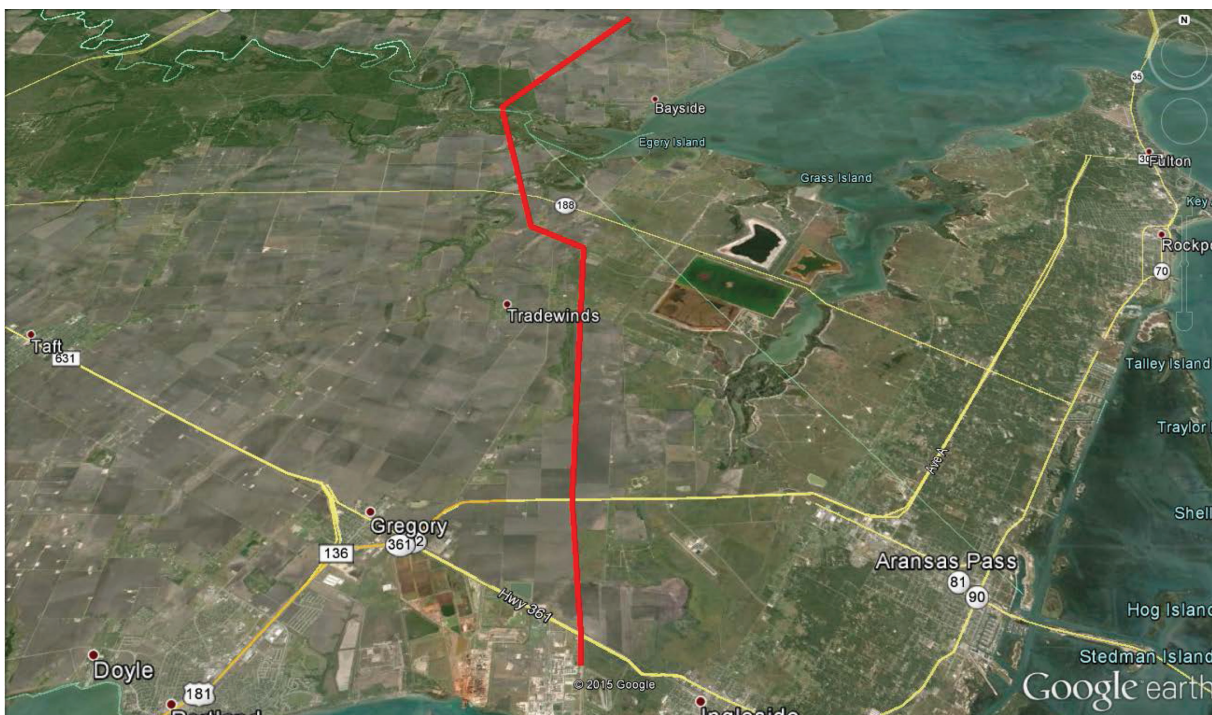
TEXAS COUNTIES OF OPERATION:

Calhoun San Patricio
 Refugio Victoria

Changes may occur. Contact the operator to discuss their pipeline systems and areas of operation.

EMERGENCY RESPONSE PLANS

An Emergency Response Plan is developed for each pipeline facility to contain, control, and mitigate the various types of emergency conditions/ situations that could occur at one of our facilities. For more information regarding emergency response plans and procedures, contact us directly.



DO NOT DIG
 CALL
 877-300-5604

**W
A
R
N
I
N
G
E**